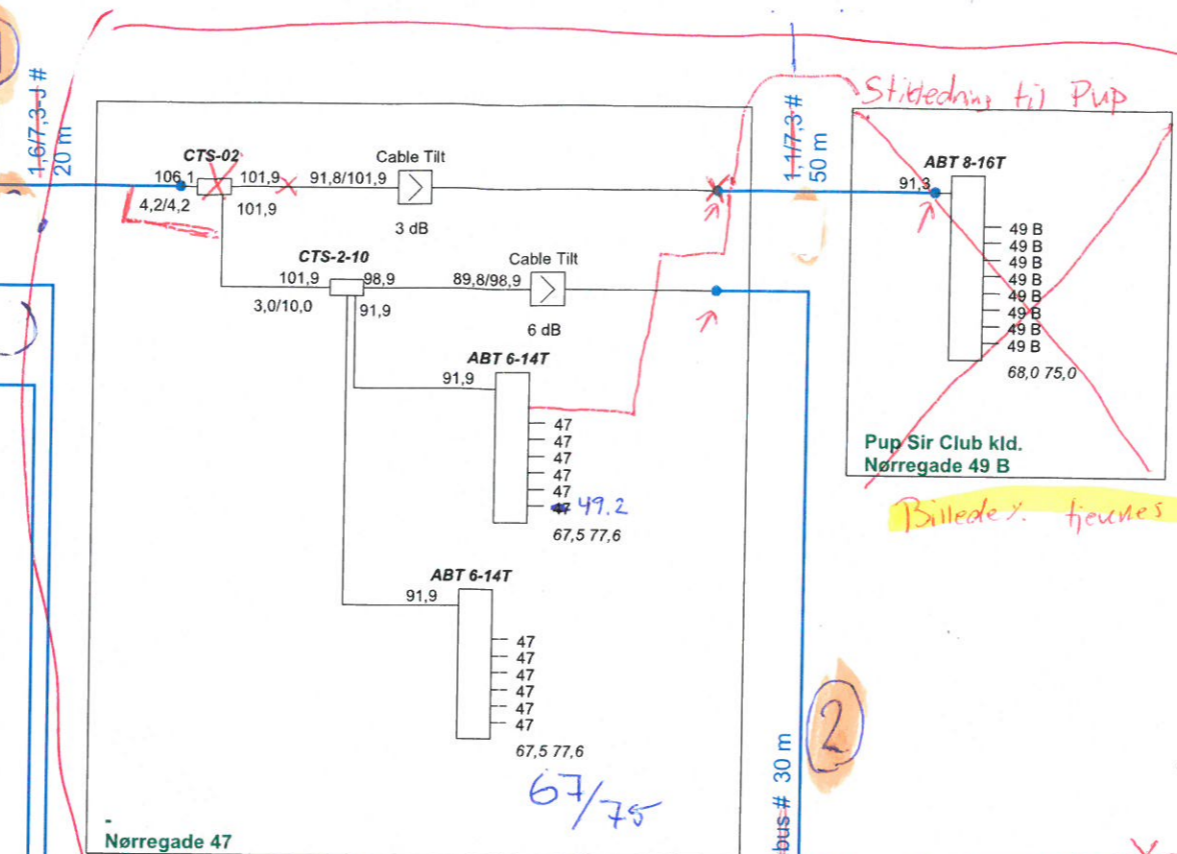


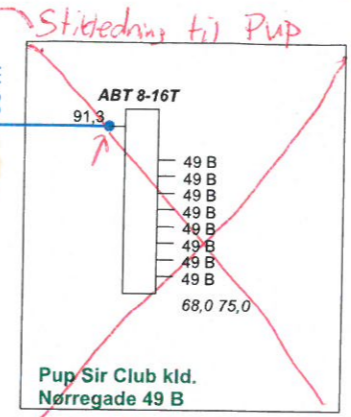
Fm stik



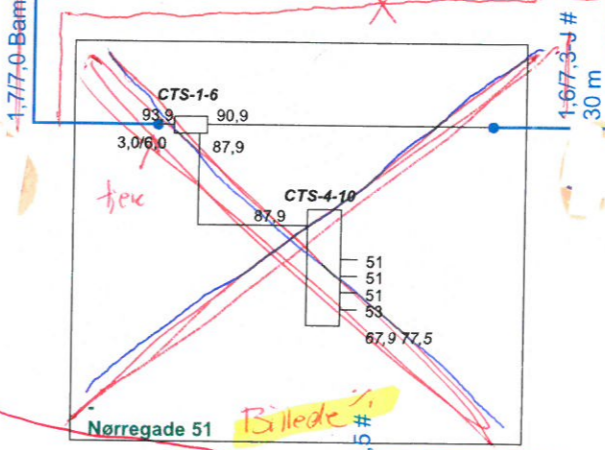
Billed x. fjernes

57/79

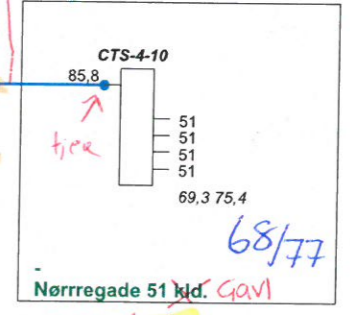
2



Billed x. fjernes

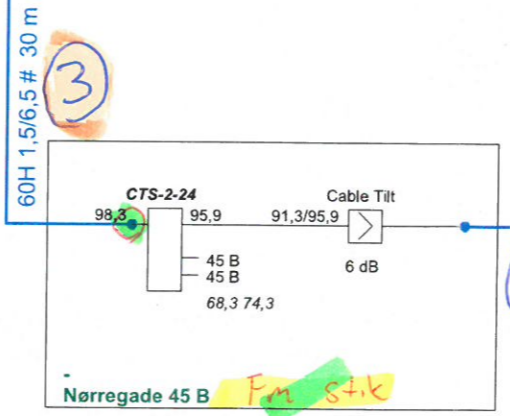


Billed x. fjernes

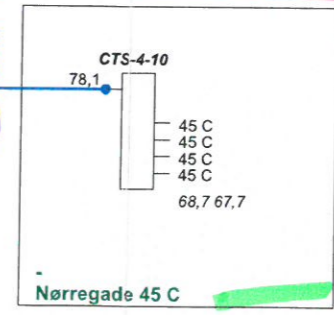
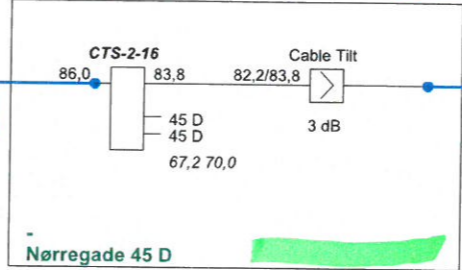


Billed x. fjernes

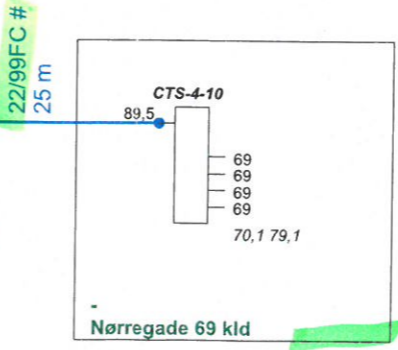
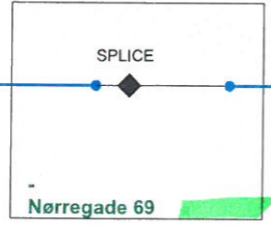
68/77



Fm stik



3,3/13,5 # 125 m



4

5

RPD089
RPD09

ProjectName : Glenten 1218	Glentevejs Antennelaug	Frequency : 282 - 1218Mhz
Reference : U 3652	Vagtelvej 1-3	Initials : jph
		Date : 24-05-2022

Forstærker ID: U3652

Kabel ID	Type A	Type B	Stiktype	Inderleder	Skærm	Yderkappe
1A	X		Fm 60-15/65	1,5	7,4	9,8
1B						
2A	X		Fm 60-15/65	1,5	7,4	9,8
2B			Fm 22/88			
3A	X		Fm 60-15/65	1,5	7,4	9,8
3B						
4A	X		Fm 60-15/65	1,47	7,43	9,8
4B						
5A	X		Fm 60-15/65	1,5	7,4	9,8
5B						
6A						
6B						
7A						
7B						
8A						
8B						
9A						
9B						
10A						
10B						
11A						
11B						
12A						
12B						
13A						
13B						
14A						
14B						

Kabeltype A = Skum/Bamboo dialektikum

Kabeltype B = Masiv dialektikum